

MAINTENANCE INSTRUCTIONS

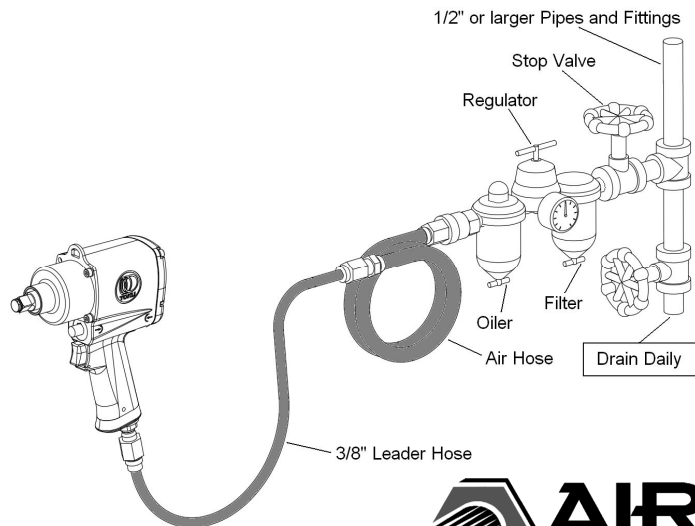
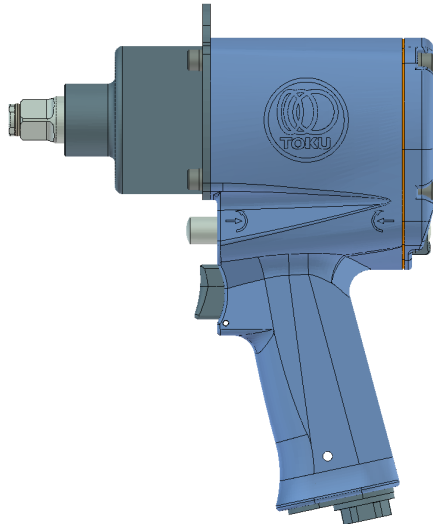
1/2" IMPACT WRENCH

MODEL MI-17M

TOKU

TOKU PNEUMATIC PRODUCTS

AIR HOSE AND HOSE CONNECTION



www.air-allied.com.au

OPERATING INSTRUCTIONS

⚠ WARNING

1. ALWAYS USE APPROVED EYE PROTECTION WHEN OPERATING THIS TOOL.
2. ALWAYS USE IMPACT SOCKET IN GOOD CONDITION. SOCKETS IN BAD CONDITION REDUCE IMPACT POWER AND COULD ALSO SHATTER AND CAUSE POSSIBLE PERSONAL INJURY. NEVER USE HAND SOCKETS.
3. ALWAYS USE THE SIMPLEST HOOKUP POSSIBLE. LONG, SPRINGY EXTENSION BARS ABSORB IMPACT AND COULD BREAK LOOSE AND CAUSE POSSIBLE PERSONAL INJURY.
4. ALWAYS DIRECT EXHAUST AWAY FROM YOURSELF AND OTHER IN THE AREA.
5. ALWAYS DISCONNECT TOOL WHEN NOT IN USE.

LUBRICATION

1. To flush out gum and dirt:
Daily before and after each shift, pour a liberal quantity of gum solvent oil into air line.
2. Connect tool to air line. Operate tool.
3. Repeat procedure before storing.
4. Monthly, check oil in impact unit.
5. At the timing of service, check oil class and q'ty if they are in accordance with the description below.
 - Oil class : Diesel motive S-320
 - Quantity in impact unit : 14cm³

AIR SUPPLY

1. Supply tool with 0.6MPa of clean, dry air. Higher pressure drastically reduces tool life and can void warranty.
2. See diagram above for Pipes, Hoses and Fittings size.
3. When using two or more tools, Air hoses should be larger than Leader Hose.

TECHNICAL DATA

Sound Pressure level L_{pA} [dB(A)]	91	Uncertainty K_{pA} [dB]	3	according to ISO 15744
Sound Power Level L_{wA} [dB(A)]	102	Uncertainty K_{wA} [dB]	3	
Vibration Emission Value ahd [m/s ²]	11.2	Uncertainty K [m/s ²]	1.60	according to ISO 28927-2

LOSS OF POWER / ERRATIC ACTION (possible causes)

1. Reduce compressor output.
2. Excessive drain on air line.
3. Moisture or restricted pipes, hoses or fittings.
4. Improper size of poor condition of pipes, hoses or fittings.
5. Dirt or gum deposits cut tool power. To correct this, check and clean air strainer, then repeat lubrication procedure. (If outside conditions are in order, disassemble tool, replace worn or damaged parts, clean, assemble and lubricate.)

REPLACEMENT PARTS

Always use **GENUINE TOKU TOOLS Replacement Parts**.
When replacement parts are required, order by Parts No. and Description in the Parts List.

2nd edition

MAINTENANCE INSTRUCTIONS

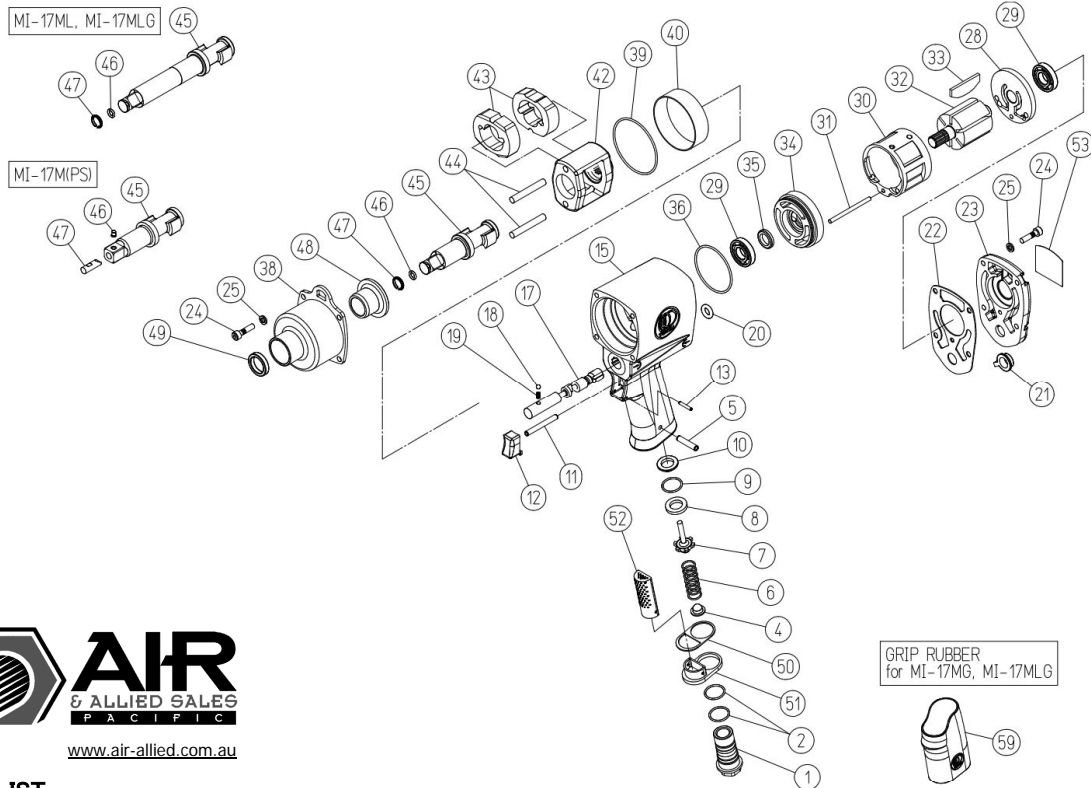
1/2" IMPACT WRENCH

MODEL MI-17M



TOKU PNEUMATIC PRODUCTS

EXPLODED VIEW



www.air-allied.com.au

PARTS LIST

Symbol No.	Parts No.	Description	Q'ty Req'd
MI-17M, MI-17MG			
1	43-18-70-850	Air Inlet (PT)	1
2	13-11-03-015	O Ring (S-18)	2
4	13-68-03-049	Air Screen	1
5	13-06-04-025	Spring Pin (4X25)	1
6	13-08-03-181	Throttle Valve Spring	1
7	43-13-94-080	Throttle Valve	1
8	13-68-04-007	Throttle Valve Seat	1
9	13-11-03-015	O Ring (S-18)	1
10	43-13-95-D80	Throttle Valve Spacer	1
11	13-04-03-140	Throttle Pin	1
12	13-67-03-034	Trigger	1
13	13-06-02-118	Spring Pin (3/32X11/16)	1
15	43-19-51-01B	Motor Housing CP	1CP
17	43-13-94-210	Reverse Valve	1
18	13-05-02-010	Steel Ball 5/32 (M3.97)	1
19	13-08-03-182	Detent Spring	1
20	13-11-17-203	O Ring (AS568-203)	1
21	13-67-04-001	Regulator Switch	1
22	13-62-02-059	Housing Cover Gasket	1
23	43-19-51-350	Housing Cover	1
24	13-17-05-020	Hex Socket Head Cap Screw M5X20	8
25	13-13-10-005	Spring Washer M5	8
28	43-11-10-370	Rear End Plate	1
29	13-01-20-004	Bearing EE-4	2
30	43-18-70-360	Liner	1
31	13-04-03-123	Liner Pin 3.71X54.76	1
32	43-18-03-390	Rotor	1
33	13-71-07-022	Vane	6
34	43-11-10-380	Front End Plate	1
35	13-12-10-003	Oil Seal (AF-0437HI)	1

Symbol No.	Parts No.	Description	Q'ty Req'd
36	13-11-17-032	O Ring (AS568-032)	1
38	43-18-70-520	Clutch Housing	1
39	13-11-17-035	O Ring (AS568-035)	1
40	13-66-22-001	Housing Adaptor Ring	1
42	43-18-70-440	Hammer Frame	1
43	43-18-01-450	Hammer	2
44	43-18-70-460	Hammer Pin	2
45	43-18-70-500	Anvil Shank	1
46	13-11-05-006	O Ring (6227-6)	1
47	13-08-05-006	Socket Retainer	1
48	43-18-70-490	Shank Bushing	1
49	13-12-02-023	Oil Seal (VB-19.05X25.4X3.2)	1
50	13-62-02-040	Exhaust Deflector Gasket	1
51	13-74-03-021	Exhaust Deflector	1
52	13-74-03-022	Muffler	1
53	13-73-05-190	Name Plate	1
59	13-66-07-061	Grip Rubber (for MI-17MG)	1
43-18-70-52C		Clutch Housing CP (Incl. Symbol No. 38, 48, 49)	(1CP)
43-18-70-50C		Anvil Shank CP (Incl. Symbol No. 45, 46, 47)	(1CP)
MI-17ML, MI-17MLG			
45	43-18-71-500	Anvil Shank (L)	1
59	13-66-07-061	Grip Rubber (for MI-17MLG)	1
43-18-71-50C		Anvil Shank (L) CP (Incl. Symbol No. 45, 46, 47)	(1CP)
MI-17M (PS)			
45	43-18-74-500	Anvil Shank	1
46	43-18-16-160	Retainer Pin	1
47	13-63-07-001	Retainer Plug	1
43-18-74-50C		Anvil Shank CP (Incl. Symbol No. 45, 46, 47)	(1CP)
(1)	43-18-70-840	Air Inlet (NPT)	(1)
			2nd edition

2nd edition